

HTD 62 TYPE

SPECIALIZE IN HIGH CURRENT & HIGH
INDUCTANCE FOR SMD INDUCTORS

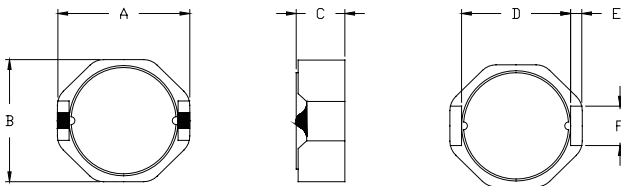
CHARACTERISTICS

1. TESTED AT 100KHZ, 0.1VRMS
2. OPERATING TEMPERATURE RANGE: -40°C TO+85°C
3. ELECTRICAL SPECIFICATIONS AT 25°C

ELECTRICAL SPECIFICATION

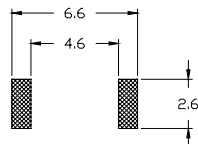
ITEM	L (μ H)	DCR MAX.(Ω)	IDC MAX.(A)
HTD62			
1R0M	1.0 \pm 20%	11	3.48
1R5M	1.5 \pm 20%	14	2.83
2R0M	2.0 \pm 20%	17	2.44
3R3M	3.3 \pm 20%	24	1.89
4R3M	4.3 \pm 20%	31	1.65
6R2M	6.2 \pm 20%	43	1.37
100M	10 \pm 20%	64	1.07
120M	12 \pm 20%	75	0.97
150M	15 \pm 20%	87	0.87
180M	18 \pm 20%	110	0.79
220M	22 \pm 20%	130	0.71
270M	27 \pm 20%	170	0.64
330M	33 \pm 20%	195	0.58
390M	39 \pm 20%	245	0.53
470M	47 \pm 20%	290	0.48
560M	56 \pm 20%	345	0.44
680M	68 \pm 20%	400	0.40
820M	82 \pm 20%	465	0.36
101M	100 \pm 20%	650	0.33

CONSTRUCTION (m/m)



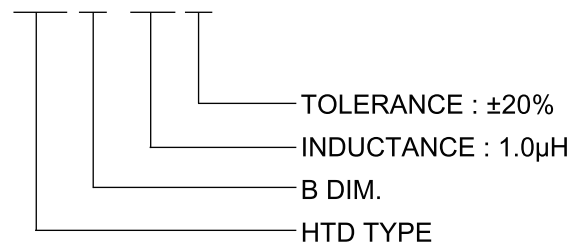
A: 6.8 MAX. B: 6.2 MAX. C: 2.5 MAX.
D: 4.8 REF. E: 0.6 REF. F: 2.0 REF.

Land Patterns



COIL CODE

HTD 62 1R0 M



* All parameters as this content presented are subject to final specifications both sides confirmed.